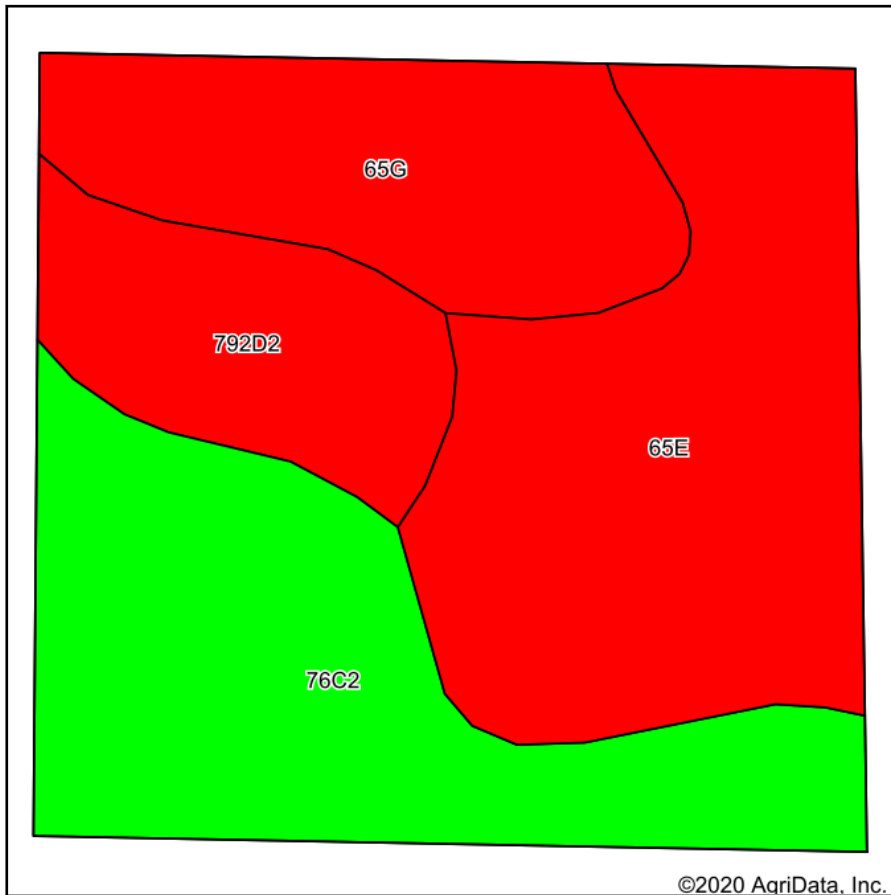
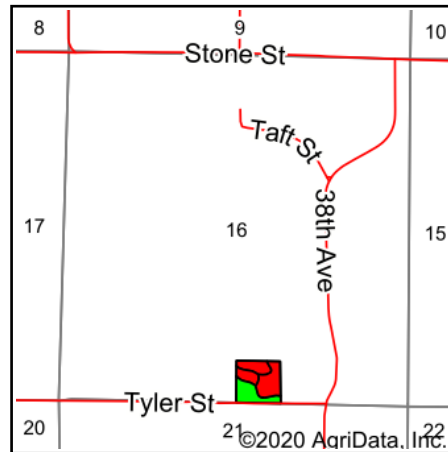


Soils Map



Soils data provided by USDA and NRCS.



State: **Iowa**
 County: **Warren**
 Location: **16-74N-25W**
 Township: **Virginia**
 Acres: **10**
 Date: **12/2/2020**



Maps Provided By:



Code	Soil Description	Acres	Percent of field	CSR2 Legend	Non-Irr Class *c	CSR2**	CSR	*n NCCPI Overall	*n NCCPI Corn	*n NCCPI Small Grains	*n NCCPI Soybeans
65E	Lindley loam, 14 to 18 percent slopes	3.49	34.9%		Vle	28	30	73	73	56	56
76C2	Ladoga silt loam, dissected till plain, 5 to 9 percent slopes, eroded	3.21	32.1%		IIIe	75	65	78	78	69	66
65G	Lindley loam, 25 to 40 percent slopes	1.95	19.5%		VIIe	5	5	19	19	15	9
792D2	Armstrong loam, 9 to 14 percent slopes, moderately eroded	1.35	13.5%		IVe	7	13	66	66	51	44
Weighted Average						35.8	34.1	*n 63.1	*n 63.1	*n 51.5	*n 48.4

**IA has updated the CSR values for each county to CSR2.

*n: The aggregation method is "Weighted Average using all components"

*c: Using Capabilities Class Dominant Condition Aggregation Method

Soils data provided by USDA and NRCS.